

Municipal Best Practice Irrigation

Darren Ferber
Managing Director
Aquatek Irrigation Pty. Ltd.

It's the Aquatek way 

Our Challenge

How do we help:

- Best Practice Irrigation solutions
- Knowledge Transfer – specific irrigation skills training
- Water resource engineering solutions

Are you ready to join with us on the challenge?



The screenshot shows the Aquatek website homepage. At the top is the Aquatek logo and a navigation menu with links for Home, Warranté Certification, The Aquatek Way, Benefits, Customer Testimonials, Downloads, and Contact Us. The main heading reads "Delivering every drop of water, right where it is needed, every time". Below this is a paragraph about Aquatek's independent solutions and another about their goal to help with irrigation needs. A section titled "It's the Aquatek way" features a funnel diagram with three levels: "POTENTIAL" (top, blue), "IN PROGRESS" (middle, green), and "SAVED" (bottom, red). To the right of the funnel is the text "How many saved Gigalitres can you contribute?". Below the funnel is the Waterite logo and a link to "Find out how much you can scientifically save, with our Waterite™ calculator". At the bottom left is a "Contact Us" link and at the bottom right is the copyright notice "© 2016 Aquatek. All rights reserved".

Best Practice Irrigation

- Must consider the holistic issues



Physical

*Main Problem:
Inefficient irrigation
systems*



Operational

*Main Problems:
Incorrect Irrigation
scheduling, Climate
change effects.*



Cultural

*Main Problem:
Necessary Knowledge
and Skills gap.*



Environmental

*Main Problem: Systems
not "fine tuned" to local
environment*

It's the Aquatek way ●●●

Field work

- Irrigation system evaluation is extremely important
 - DGPS surveying – asset and digital model creation
 - System performance indicators – irrigation uniformity



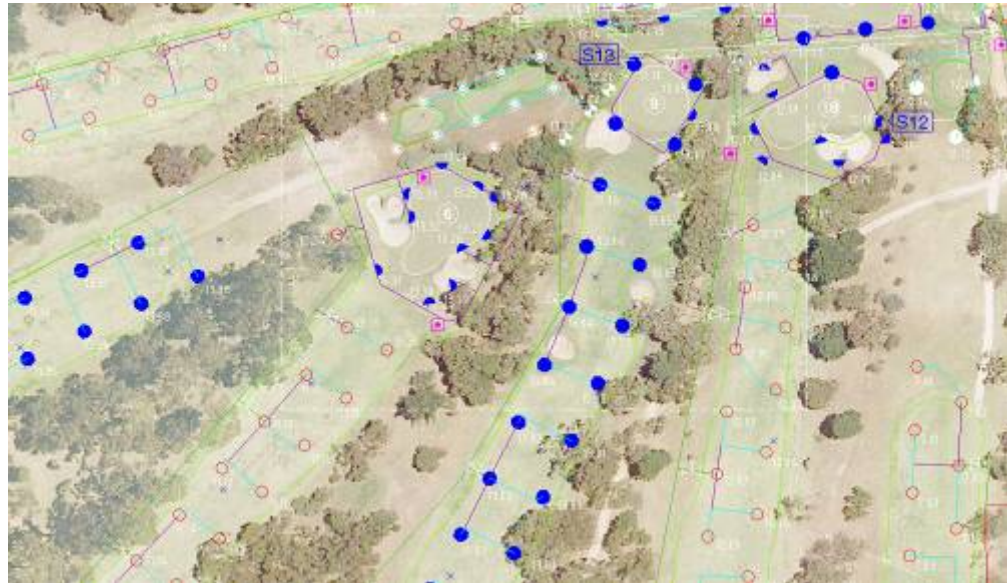
Performance Indicators



It's the Aquatek way ●●●

Analysis/Design Work

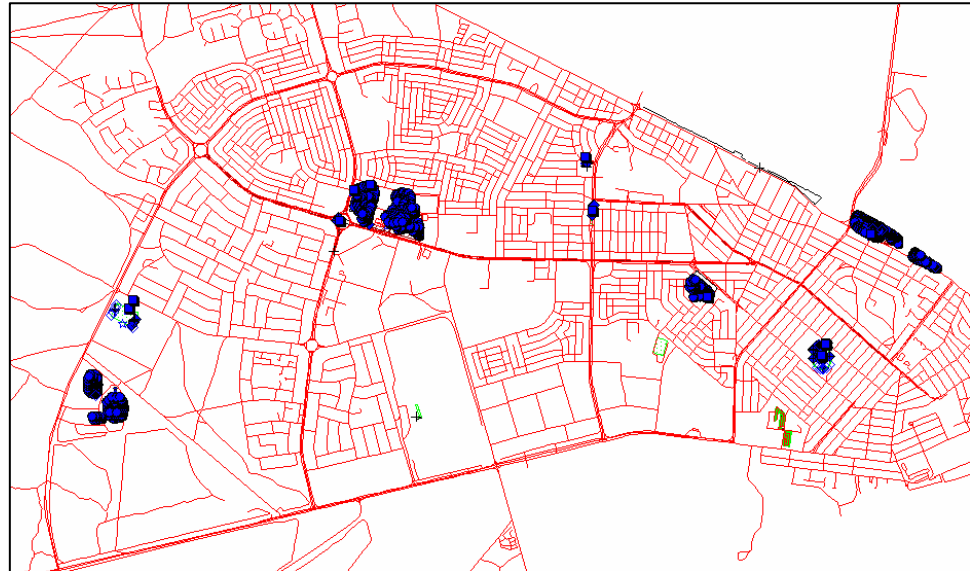
- Accurate digital modeling allows a thorough and true analysis of your systems.
- Remedial solutions can be engineered and precisely deployed using DGPS technology.



It's the Aquatek way 

Planning

- City wide accurate modeling allows efficient reticulation design possibilities.
- Automation becomes more efficient due to accurate and accessible field data



It's the Aquatek way ●●●

City of Whyalla – Proposed Effluent Irrigated sites data

Water Engineering

- Experience – fully qualified civil engineers
- Preferred solutions provider for City of Tea Tree Gully
 - Greenwith Saline water management solution
 - Civic Park water-reuse and irrigation scheme
 - Edinburgh Wetlands harvest system
 - Solandra ASR injection scheme
 - Kingfisher Wetland scheme and Modbury Sports Park Irrigation
- ASR and Wetland Schemes – Pumping, Pipework, Treatment, Automation Design.
- General Hydraulic engineering.

It's the Aquatek way 

Strategic Direction

- We can assist and provide leadership with the strategic direction for outdoor water procurement, efficient outdoor usage and training (skills and knowledge transfer). Let us add value to your team.

It's the Aquatek way 

Waterite Certified

- Come and join us in the challenge and get



Certified

It's the Aquatek way 